

**My Comments on
The Bradford Local Plan**

Subject: Protest re Bradford Local Plan for another 800 houses in Ilkley

COMMENT : We strongly object to the plan to build an additional 800 houses in Ilkley and Ben Rhydding.

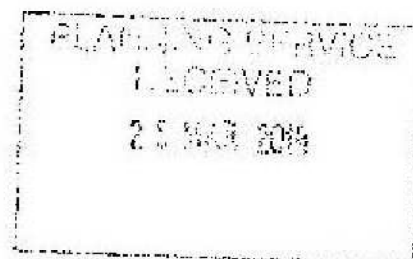
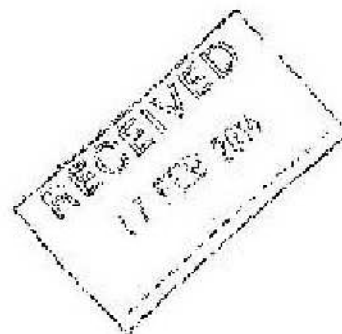
TRAFFIC

The road network around and within Ilkley is already severely stretched. Traffic jams on the A65 are common. At peak times and on summer weekends, there is frequently a queue of traffic stretching for over a mile along the A65 on either side of the Ilkley town centre. (The projected building of a superstore in Railway Road will itself bring the central road network to breaking point.) The traffic generated by the occupants of 800 houses will extend the traffic paralysis.

The only main road access to Ilkley is on the A65. Other roads are minor. Traffic generated by the proposed development will exacerbate the existing traffic jams on the A65 which is, supposedly, the main trunk road to the North West, Lake District and Scotland. The increased traffic will also severely limit the ability of the emergency services to reach the town.

There is substantial commuting traffic on the train service to Leeds and Bradford, which is already over-crowded at peak times. The service cannot accommodate the extra traffic generated by the residents of 800 new dwellings.

Car parking in the centre of Ilkley is already at a premium. It is often impossible to find a space in the car parks. Parking extends onto residential roads well away from the town centre. On Middleton Avenue, for example, cars are parked on both sides of the road and can stretch for nearly a mile from the town centre, often causing problems for through traffic.



• TOURISM

Ilkley is one of Bradford's main assets. It offers many attractions of which the whole area can be proud. Ilkley Moor attracts thousands of people of all ages who appreciate the wide open spaces and the views of the surrounding countryside. This will be defaced by 800 new dwellings.

Ilkley's festivals attract many visitors. The Literature Festival has a national reputation (thanks to the early faith and support of Bradford) In addition, just this weekend, the first ever Ilkley Film Festival will be launched. We're confident this too will prove a major attraction. The proposed development would severely diminish the attractiveness of the town and its ability to attract tourists and generate jobs.

• SCHOOLS

The schools in Ilkley are already full. It is often impossible for existing residents to secure a place for their children in the Ilkley schools. The problem would be even worse with the children from the 800 homes competing for school places.

• INFRASTRUCTURE

Flooding in the lower areas of the town is common. The recent inundations have demonstrated the result if concrete replaces soil: floods result from the removal of natural drainage.

The other infrastructure services of Ilkley are not designed to cope with the population generated by 800 new dwellings.

• WHY BUILD ON GREEN BELT?

The development proposed would seriously affect the green 'lungs' the region provides. Previous planning policies have avoided precipitating unattractive ribbon development in this part of the region.

Bradford and Keighley have substantial tracts of derelict brownfield land. They exist in areas where demand for local services has declined because of falling population. The brownfield sites should be developed before removing the

